



DURATION: 10 MINUTES



MATERIALS REQUIRED: PENCIL AND PAPER

Aim: Test your knowledge of Scotland's outdoors.

Instructions: Answer the questions then check your answers at the bottom of the next page.

1. We'll start with an easy question. Which colour on this map shows Scotland?

- a) green b) blue c) red d) yellow

2. Which of these trees is **not** native to Scotland?

- a) alder b) Scots Pine c) sycamore d) hazel

3. Which of these animals can sometimes be found near Scotland's coastline?

- a) tiger shark b) thresher shark c) hammerhead shark d) basking shark



4. Approximately how much does a Queen Bumblebee weigh?

- a) 8 grams b) 400 grams c) 60 grams d) 0.8 grams

5. Scotland has many mountains, but which of these is a Scottish mountain?

- a) K2 b) Ben Nevis c) Denali d) Eiger

6. We all know that litter is very bad for the environment, but how long does it take for a plastic bottle to break down?

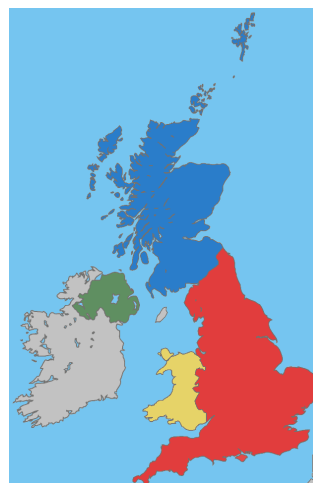
- a) 1 month b) 1 year c) 50 years d) 450 years

7. Which of these Scottish rivers is the longest?

- a) River Don b) River Clyde c) River Tay d) River Tweed

8. Which of these Scottish trees is deciduous? (meaning it loses its leaves in the autumn)

- a) ash b) noble fir c) Scots Pine d) Spruce



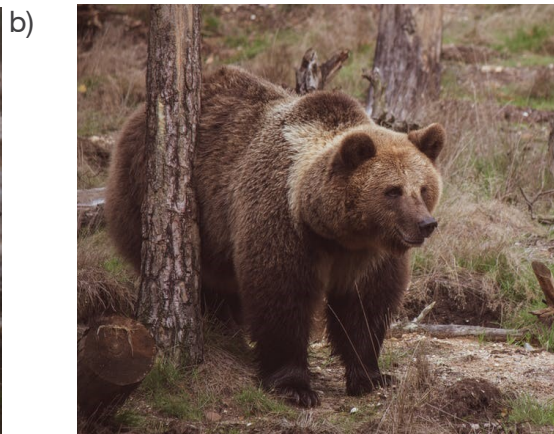
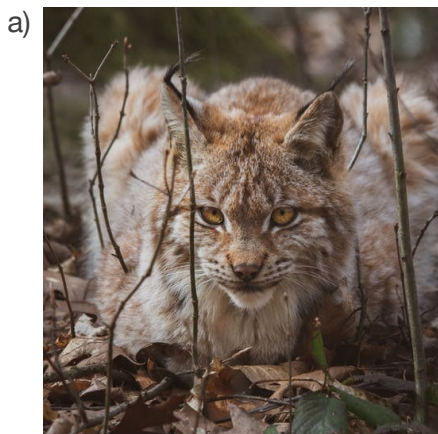
Enjoy this activity? Tag us @SustransScot on [Facebook](#) and [Twitter](#).

Make sure you get permission first!

Funded by Scottish Government and delivered by Sustrans in partnership with local authorities, I Bike promotes cycling, walking and scooting in schools. I Bike encourages exercise and reduces congestion by empowering teachers, parents and pupils to travel actively, safely and confidently to school.

Find out more at www.ibike.sustrans.org.uk

9. Which of these mammals can still be found in Scotland today?



10. Which two of the following energy sources provide what is known as 'renewable energy'?

a) solar power b) natural gas c) coal d) hydropower

10. a) & d).

Answers: 1. b) 2. c) Sycamore trees were brought to the UK in the 15th or 16th century from other parts of Europe. 3. d) They sometimes visit islands off the west of Scotland during the summer. 4. d) Queen Bumblebees are bigger than other bumblebees. 5. b) 6. d) 7. b) It is 120 miles (or 193km). The Don is 82miles, the Clyde is 106 miles and the Tweed is 97miles. 8. a) The other trees are all coniferous. 9. d) Scotland no longer has any large predators such as lynx, bears or wolves.

Enjoy this activity? Tag us @SustransScot on [Facebook](#) and [Twitter](#).

Make sure you get permission first!

Funded by Scottish Government and delivered by Sustrans in partnership with local authorities, I Bike promotes cycling, walking and scooting in schools. I Bike encourages exercise and reduces congestion by empowering teachers, parents and pupils to travel actively, safely and confidently to school.

Find out more at www.ibike.sustrans.org.uk