

# I Bike Journey Planner

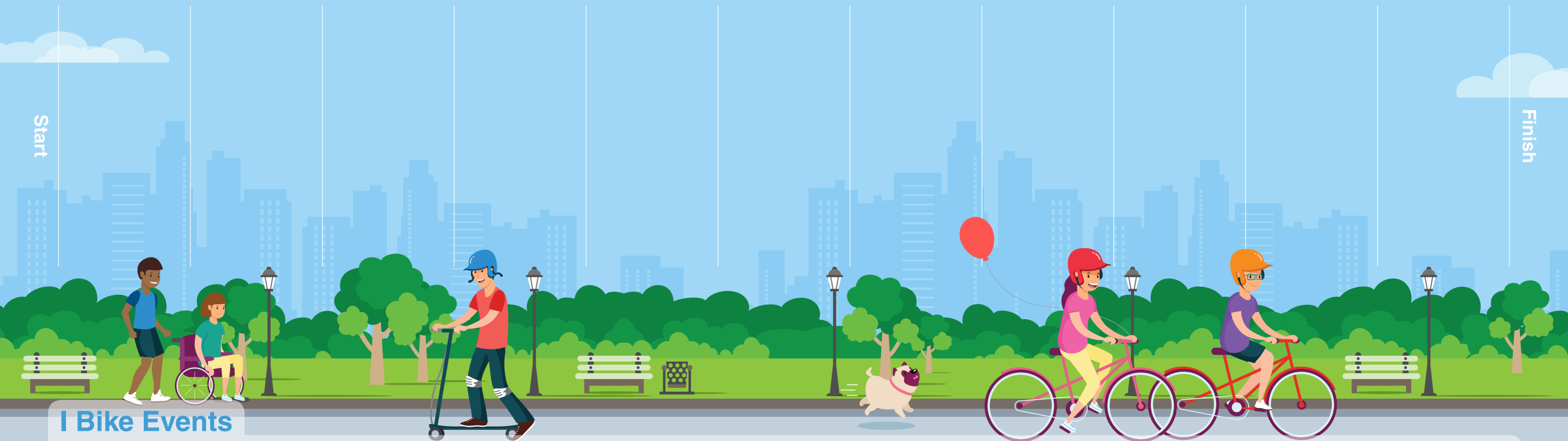
## How to use this planner:

- Add your planned activities to the blank boxes below (by writing in or using the stickers provided) to help you schedule events throughout the year.
- Add stickers to the Success Tracker to celebrate your successes and track your progress.

## School Events

August	September	October	November	December	January	February	March	April	May	June
<ul style="list-style-type: none"> <li>• School Champion</li> <li>• Bike Crew</li> </ul>	<ul style="list-style-type: none"> <li>• Pre-survey</li> <li>• Bike &amp; Scooter parking needed?</li> </ul>	<ul style="list-style-type: none"> <li>• Engage staff</li> <li>• Agree training plans</li> </ul>	<ul style="list-style-type: none"> <li>• Engage parents</li> <li>• Seek volunteers</li> </ul>	<ul style="list-style-type: none"> <li>• Classroom sessions</li> </ul>	<ul style="list-style-type: none"> <li>• Confirm training &amp; recruitment</li> </ul>	<ul style="list-style-type: none"> <li>• Plan next year</li> <li>• Promote active travel</li> </ul>	<ul style="list-style-type: none"> <li>• Bike Crew thriving?</li> </ul>	<ul style="list-style-type: none"> <li>• Launch bike club</li> </ul>	<ul style="list-style-type: none"> <li>• Post-survey</li> </ul>	<ul style="list-style-type: none"> <li>• Celebrate I Bike year!</li> </ul>

## Success Tracker



## I Bike Events

August	September	October	November	December	January	February	March	April	May	June
<ul style="list-style-type: none"> <li>• Plan activity dates</li> </ul>	<ul style="list-style-type: none"> <li>• School launch assembly</li> <li>• Note curriculum target areas</li> </ul>	<ul style="list-style-type: none"> <li>• Recruitment &amp; training plans</li> </ul>	<ul style="list-style-type: none"> <li>• I Bike activities</li> </ul>	<ul style="list-style-type: none"> <li>• Classroom sessions</li> </ul>	<ul style="list-style-type: none"> <li>• Classroom sessions</li> </ul>	<ul style="list-style-type: none"> <li>• Active travel / learning events</li> </ul>	<ul style="list-style-type: none"> <li>• I Bike activities / events</li> </ul>	<ul style="list-style-type: none"> <li>• Staff / parent sessions</li> <li>• Targeted group activities</li> </ul>	<ul style="list-style-type: none"> <li>• Staff / parent sessions</li> <li>• Transition rides</li> </ul>	<ul style="list-style-type: none"> <li>• Celebrate I Bike year!</li> </ul>

# I Bike Journey Planner

## How to use this planner:

- Add your planned activities to the blank boxes below (by writing in or using the stickers provided) to help you schedule events throughout the year.
- Add stickers to the Success Tracker to celebrate your successes and track your progress.

## School Events

August	September	October	November	December	January	February	March	April	May	June
<ul style="list-style-type: none"> <li>• School Champion</li> <li>• Bike Crew</li> </ul>	<ul style="list-style-type: none"> <li>• Pre-survey</li> <li>• Bike &amp; Scooter parking needed?</li> </ul>	<ul style="list-style-type: none"> <li>• Engage staff</li> <li>• Agree training plans</li> </ul>	<ul style="list-style-type: none"> <li>• Engage parents</li> <li>• Seek volunteers</li> </ul>	<ul style="list-style-type: none"> <li>• Classroom sessions</li> </ul>	<ul style="list-style-type: none"> <li>• Confirm training &amp; recruitment</li> </ul>	<ul style="list-style-type: none"> <li>• Plan next year</li> <li>• Promote active travel</li> </ul>	<ul style="list-style-type: none"> <li>• Active Travel Forum thriving?</li> </ul>	<ul style="list-style-type: none"> <li>• Launch bike club</li> </ul>	<ul style="list-style-type: none"> <li>• Post-survey</li> </ul>	<ul style="list-style-type: none"> <li>• Celebrate I Bike year!</li> </ul>

## Success Tracker



## I Bike Events

August	September	October	November	December	January	February	March	April	May	June
<ul style="list-style-type: none"> <li>• Plan activity dates</li> </ul>	<ul style="list-style-type: none"> <li>• School launch assembly</li> <li>• Note curriculum target areas</li> </ul>	<ul style="list-style-type: none"> <li>• Recruitment &amp; training plans</li> </ul>	<ul style="list-style-type: none"> <li>• I Bike activities</li> </ul>	<ul style="list-style-type: none"> <li>• Classroom sessions</li> </ul>	<ul style="list-style-type: none"> <li>• Classroom sessions</li> </ul>	<ul style="list-style-type: none"> <li>• Active travel / learning events</li> </ul>	<ul style="list-style-type: none"> <li>• I Bike activities / events</li> </ul>	<ul style="list-style-type: none"> <li>• Staff / parent sessions</li> <li>• Targeted group activities</li> </ul>	<ul style="list-style-type: none"> <li>• Staff / parent sessions</li> <li>• Transition rides</li> </ul>	<ul style="list-style-type: none"> <li>• Celebrate I Bike year!</li> </ul>