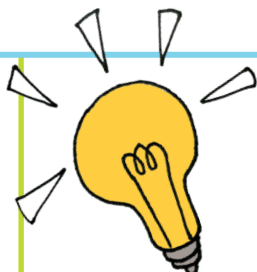


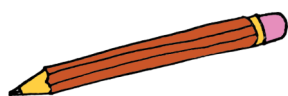


STEM

**IMAGINE YOU ARE A BRILLIANT DESIGNER
OR SCIENTIST**

Aim: Design an invention to take you on your journey to school from home

- What do you need to carry to school?
- Is your invention sustainable—made from recycled or eco friendly materials? Is it human powered?
- How will you make it appealing to pupils your age?
- What is needed to keep you safe?
- You could draw it or make a prototype!
- Label the parts to explain what they do.



Enjoy this activity? Use #stayhomestayactive and tag us @SustransScot on [Facebook](#) and [Twitter](#).

Make sure you get permission first!

Funded by Scottish Government and delivered by Sustrans in partnership with local authorities, I Bike promotes cycling, walking and scooting in schools. I Bike encourages exercise and reduces congestion by empowering teachers, parents and pupils to travel actively, safely and confidently to school.

Find out more at www.ibike.sustrans.org.uk